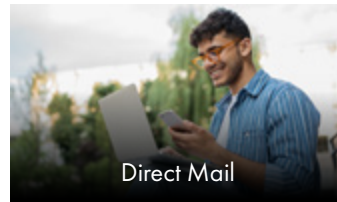
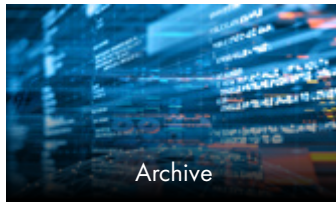
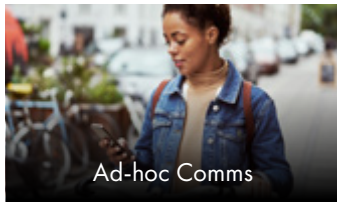
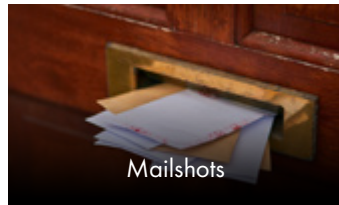
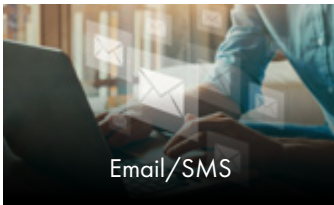




# OVERCOME THE CHALLENGES OF OUTBOUND PRINTED COMMUNICATIONS

Hybrid Mail is a remote printing and multi-channel output service that lets you print and send office mail from your desktop to a centralised print or digital fulfilment facility, from wherever you are. It replaces your in-house mail room and manages the print, enclose and despatch process for you, with full integration into your in-house systems.

## HYBRID MAIL CAPABILITIES:



## THE BENEFITS OF HYBRID MAIL:

- ✓ Regain control of your printing and mailing process
- ✓ Reduce costs
- ✓ Increase staff's productivity
- ✓ Reduce lead times of mailings with faster submission and printing
- ✓ Greater visibility with live tracking and audit trails
- ✓ Flexible postage options
- ✓ Safe & secure data transfers
- ✓ Greater flexibility for your teams to manage mailings whilst maintaining compliance

**SAVE UP TO 60%, JUST ON PAPER, INK, ENVELOPES AND POSTAGE ALONE, THAT'S BEFORE YOU ADD IN HANDLING TIME, PRINTING EQUIPMENT AND MAINTENANCE!**

**Contact your Account Manager for more information.**

*Please note: Hybrid mail is offered to our customers as part of a consolidation strategy. The Hybrid Mail solution is implemented and delivered through PCC.*

